



wavetec

Data Evaluation / Servicebox

for wavetec Speed Displays

With your **wavetec** Speed Display you can not just indicate the appropriateness of driving behaviour, but you can collect and evaluate the traffic data.

To evaluate your data we have created our "User Assistant" software, which is optimized to set parameters, read data and turning it with one click into vivid diagrams and PDF-reports. This way you have easy and fast access to all information you need for traffic analysis or a citizens' initiatives for example.

To easily set speed thresholds and check the functionality of the complete device we developed the **Servicebox**, which is placed external at the back of your device. The Servicebox contains USB-interface and interface for Control-Terminal also.

facts:

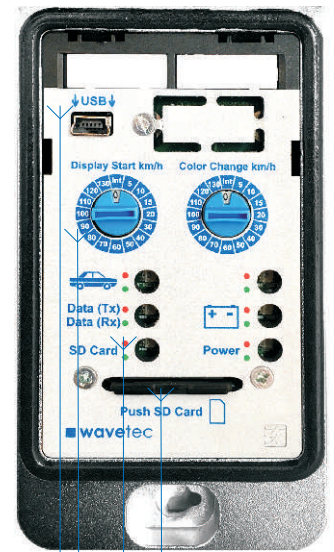
- ✓ external, easy access, placed on the back of the Speed Display's housing
- ✓ solid, closable, waterproof lid
- ✓ SD Card: >/= 512 Byte (FAT 16-formatted)
- ✓ Storage for more than 4.5 million individual vehicle data sets
- ✓ Realtime clock with calendar
- ✓ Saving of date, time, entering- and leaving-speed
- ✓ (energy saving function) adjustable by software
- ✓ set speed thresholds adjustable by easy to use turn-switches
- ✓ Turn-switches for setting thresholds for "color change option"
- ✓ Control-LEDs for Power; battery; SD-Card; Detector/Radar; Datatransfer
- ✓ Plug-Ins: USB and RS232 for optional Terminal
- ✓ Software-License
 - for Evaluating-software **wavetec** "User Assistant":
 - huge Evaluation Pack
 - Reading Data with any SD-compatible PC

Datacable USB

- for Connection between PC and Speed Display
- to adjust settings and check your Speed Display's functionality

please mind:

The Servicebox is also available without data storage.

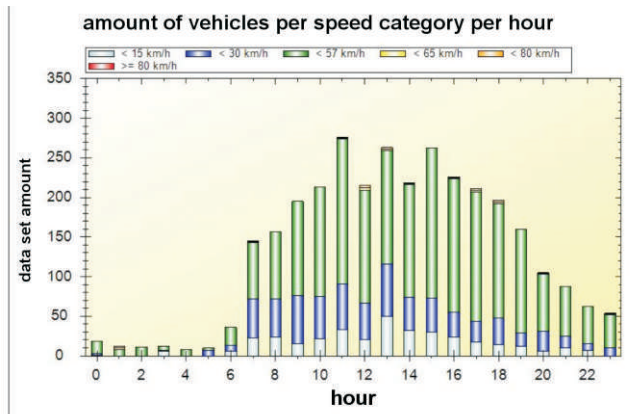


- ▶ SD-Slot
- ▶ function-LEDs
- ▶ turning-switch: setting speed-thresholds
- ▶ plug-ins: USB and interface for optional Terminal

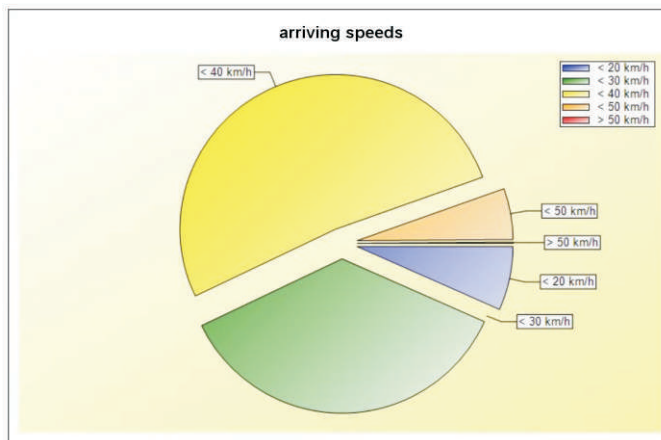




Amount of data per speed category per hour (24 h)

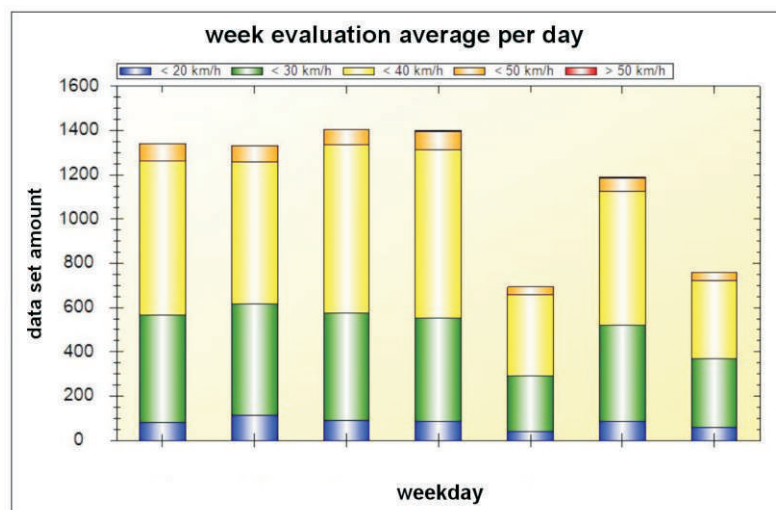


Amount of data per speed category in percent



	< 20 km/h	< 30 km/h	< 40 km/h	< 50 km/h	> 50 km/h	#
%	6,67	36,21	51,67	5,33	0,12	100

Diagram: Week evaluation on average per day divided in speed categories



Tabular: Weevaluation on average per day divided in speed categories



	Mon	Tue	Wed	Thu	Fri	Sat	Sun	#
< 20 km/h	81	112	88	86	38	86	59	550
< 30 km/h	486	503	489	465	252	436	308	2939
< 40 km/h	696	644	760	762	367	605	353	4187
< 50 km/h	78	72	66	84	36	60	38	434
> 50 km/h	1	2	1	3	0	3	0	10
#	1342	1333	1404	1400	693	1190	758	8120